

16 April 2024

Pōkeno Main St and Roundabout upgrade project

Kia ora,

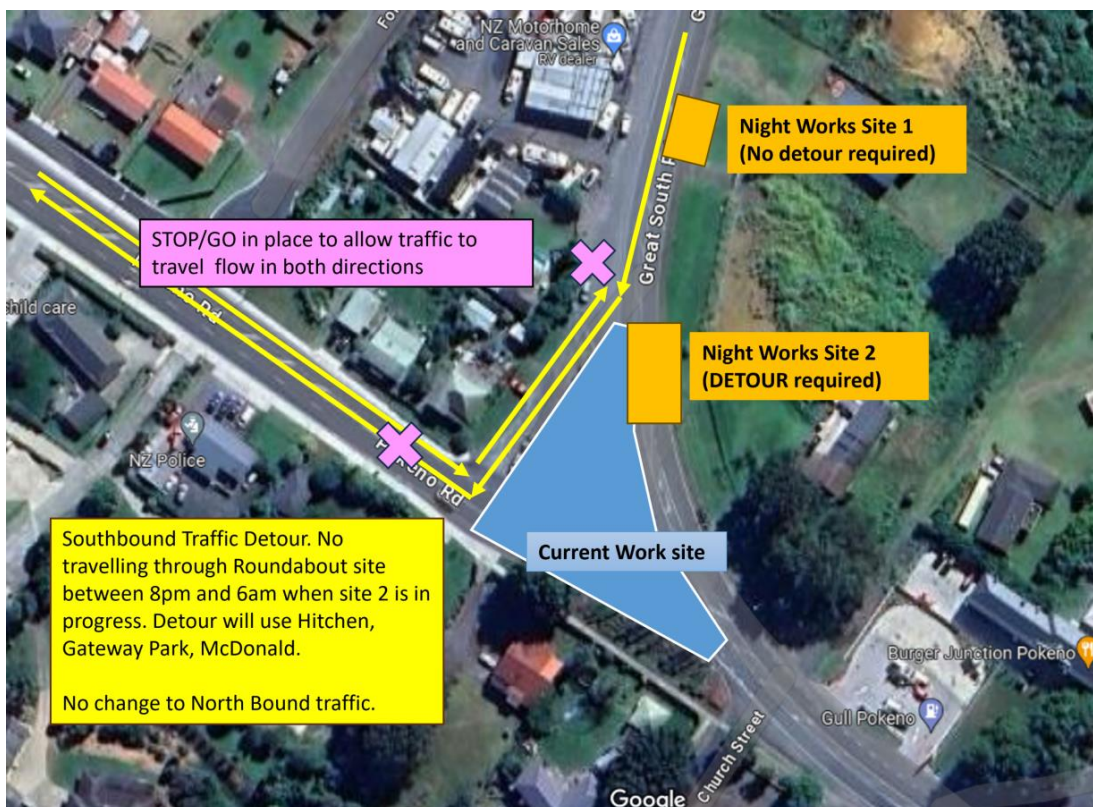
We are progressing rapidly with our work at the new roundabout site and now need to connect essential drainage lines across Great South Rd in 2 locations.

To complete the second of these sites, **Great South Road needs to be temporarily closed for site 2 (see map below).**

To minimise disruption to business and the public we **will be doing 3 night shifts between the hours of 8pm and 6am, between Sunday 21 April and Tuesday 23 April.**

During these hours of work southbound motorists may need to use the detour around Hitchen Rd, Gateway Park Rd, and McDonald Road to access the town centre. Direct passage will not be possible through the roundabout site when the detour is in place.

Motorists should expect minor delays to their travel times between the hours of 8pm and 6am.





If you have any questions please get in touch with Brian Cathro on 021 412 626 or brian.cathro@waikatoalliance.co.nz

We appreciate that there will be some noise impact during these shifts and always seek to keep this to a minimum.

Thank you for your understanding and co-operation whilst we carry out these essential works.

Where	Great South Road, Pōkeno
When (start date for night shifts)	Sunday 21 April 2024 – 8pm
Hours of work	8pm to 6am
For (duration)	3 consecutive nights – Sun, Mon, Tues